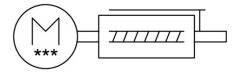
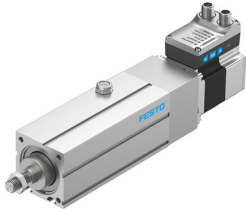


Electric cylinder unit

EPCS-BS-60-50-5P-A-ST-M-H1-PLK-AA

Part number: 8118287

FESTO



Data sheet

Feature	Value
Size	60
Stroke	50 mm
Stroke reserve	0 mm
Piston rod thread	M12x1.25
Reversing backlash	100 µm
Screw diameter	12 mm
Spindle pitch	5 mm/U
Max. angle of rotation of the piston rod +/-	1 deg
Type code	EPCS
Mounting position	Any
Piston rod end	External thread
Motor type	Stepper motor
Structural design	Electric actuator with ball screw drive With integrated drive
Spindle type	Ball screw drive
Symbol	00997294
Protection against torsion/guide	With plain-bearing guide
Homing	Fixed stop block positive Fixed stop block, negative Reference switch
Rotor position sensor	Absolute encoder, single-turn
Rotor position sensor measuring principle	Magnetic
Additional functions	User interface Integrated end-position sensing
Display	LED
Ready status indication	LED
Max. acceleration	1.5 m/s ²
Max. speed	0.09 m/s
Repetition accuracy	±0.02 mm
Characteristics of digital logic outputs	Configurable Not galvanically isolated
Duty cycle	100%
Insulation protection class	B
Max. current of digital logic outputs	100 mA
Max. current consumption	5300 mA
DC nominal voltage	24 V

Feature	Value
Nominal current	5.3 A
Parameterization interface	IO-Link® User interface
Rotor position sensor resolution	16 bit
Permissible voltage fluctuations	+/- 15 %
Power supply, type of connection	Plug
Power supply, connection technology	M12x1, T-coded as per EN 61076-2-111
Power supply, number of pins/wires	4
Power supply, connection pattern	00995989
Certification	RCM compliance mark
KC characters	KC EMC
CE marking (see declaration of conformity)	As per EU EMC directive As per EU RoHS directive
Vibration resistance	Transport application test with severity level 1 as per FN 942017-4 and EN 60068-2-6
Shock resistance	Shock test with severity level 1 as per FN 942017-5 and EN 60068-2-27
Corrosion resistance class (CRC)	0 - No corrosion stress
Storage temperature	-20 °C ... 60 °C
Relative air humidity	0 - 90 % Non-condensing
Degree of protection	IP40
Ambient temperature	0 °C ... 50 °C
Note on ambient temperature	Above an ambient temperature of 30°C, the power must be reduced by 2% per K.
Max. torque Mx	0 Nm
Max. torque My	6.4 Nm
Max. torque Mz	6.4 Nm
Max. radial force on actuator shaft	230 N
Max. feed force Fx	900 N
Guide value for payload, horizontal	120 kg
Guide value for payload, vertical	46 kg
Moving mass at 0 mm stroke	305 g
Additional weight per 10 mm stroke	69 g
Basic weight with 0 mm stroke	2294 g
Product weight	2639 g
Additional moving mass per 10 mm stroke	6.5 g
Number of digital logic outputs 24 V DC	2
Number of digital logic inputs	2
Logic input specification	Based on IEC 61131-2, type 1
Work range of logic input	24 V
Characteristics of logic input	Configurable Not galvanically isolated
IO-Link®, SIO mode support	Yes
IO-Link®, protocol version	Device V 1.1
IO-Link®, communication mode	COM3 (230.4 kBd)
IO-Link®, port class	A
IO-Link®, number of ports	1
IO-Link®, process data width OUT	2 Byte
IO-Link®, process data content OUT	1 bit (move in) 1 bit (move out) 1 bit (quit error)
IO-Link®, process data width IN	2 Byte
IO-Link®, process data content IN	1 bit (state device) 1 bit (state move) 1 bit (state in) 1 bit (state out)

Feature	Value
IO-Link®, service data contents IN	32 bit force 32 bit position 32 bit speed
IO-Link®, minimum cycle time	1 ms
IO-Link®, data memory required	500 byte
Max. cable length	15 m outputs 15 m inputs 20 m for IO-Link® operation
Switching logic at outputs	NPN (negative switching) PNP (positive switching)
Input switching logic	NPN (negative switching) PNP (positive switching)
Logic interface, connection type	Plug
Logic interface, connection technology	M12x1, A-coded as per EN 61076-2-101
Logic interface, number of poles/wires	8
Logic interface, connection pattern	00992264
Type of mounting	With internal thread With accessories
Note on materials	Contains paint-wetting impairment substances RoHS-compliant
Housing material	Wrought aluminum alloy, smooth-anodized
Piston rod material	High-alloy stainless steel
Spindle nut material	Steel
Spindle material	Roller bearing steel